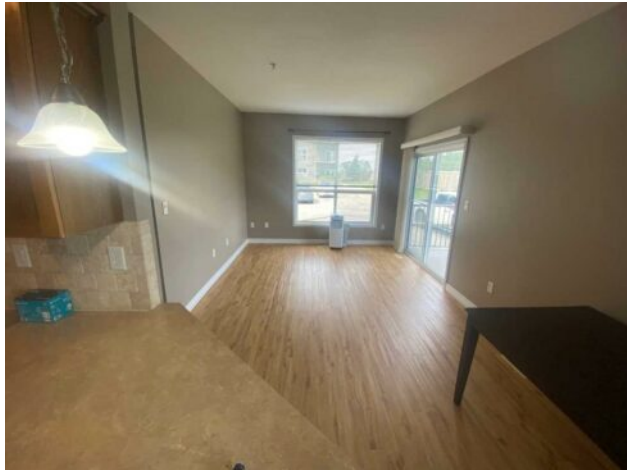


**103, 9229 Lakeland Drive
Grande Prairie, Alberta**

MLS # A2182342



\$174,900

Division:	Lakeland		
Type:	Residential/Low Rise (2-4 stories)		
Style:	Apartment		
Size:	865 sq.ft.	Age:	2006 (19 yrs old)
Beds:	2	Baths:	2
Garage:	Stall		
Lot Size:	-		
Lot Feat:	-		

Heating:	Boiler, Combination, Fan Coil	Water:	-
Floors:	Carpet, Laminate, Linoleum	Sewer:	-
Roof:	-	Condo Fee:	\$ 574
Basement:	-	LLD:	-
Exterior:	Mixed, Vinyl Siding, Wood Frame	Zoning:	Residential
Foundation:	-	Utilities:	-
Features:	Laminate Counters, Open Floorplan		

Inclusions: none

Welcome to this charming and well cared for, 2 bedroom, 2 FULL bath Condo in desirable Lakeland , an outstanding condo that offers the perfect blend of comfort and convenience. This ground level corner unit is private and easy to access, no stairs or elevators to deal with. The condo is wide open with the Kitchen, dinning, and living room together. In suite laundry and storage add to the convenience of this floor plan. The two bedrooms are on opposite sides of the living area, are both a good size and offer sanctuary within this superb condo. call your Realtor to book a private view.